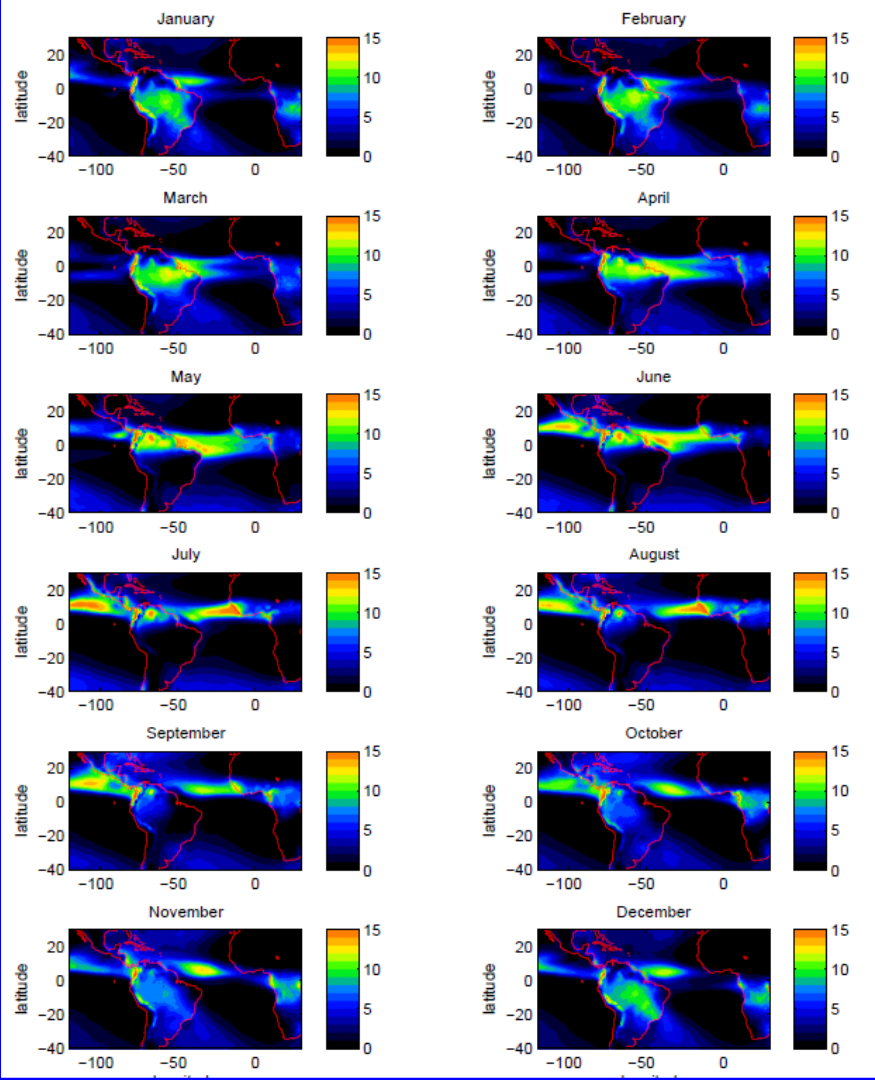
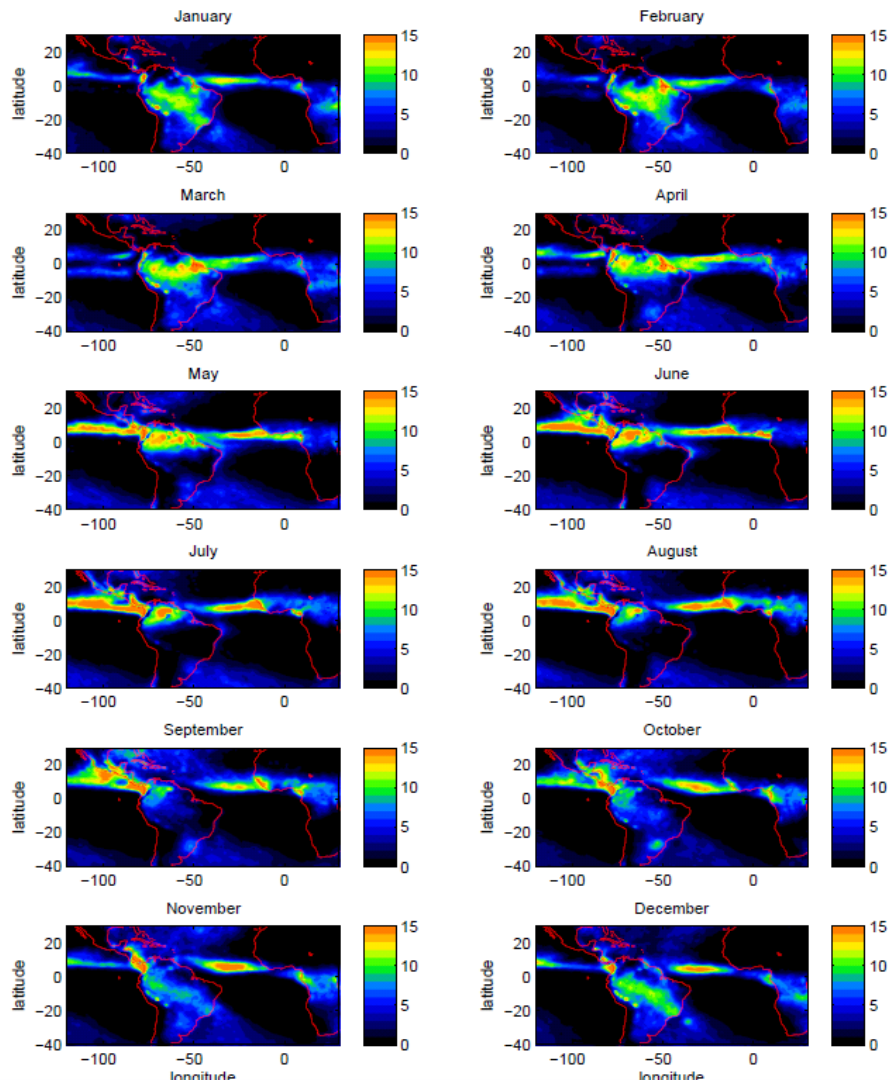




23-May-16

Atlantic: Rainfall in the ITCZ

Maps of rainfall climatology: observations (TRMM, left); model (right).



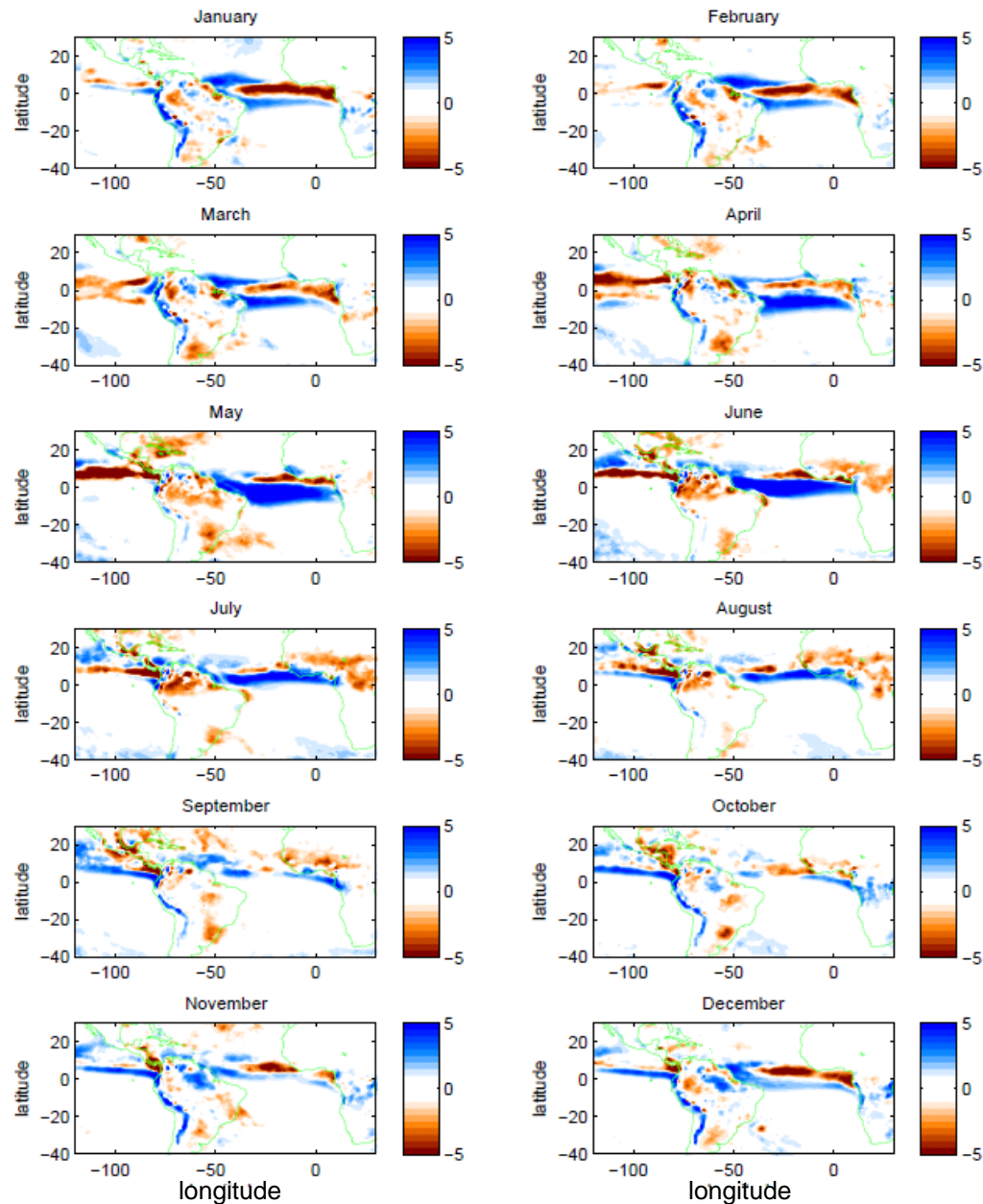


23-May-16

Atlantic: Rainfall in the ITCZ

Maps of monthly bias in rainfall / mm d^{-1} , comparing TRMM rainfall to seven-month hindcasts from ECMWF System 4.

- Blue: too wet; brown: too dry.

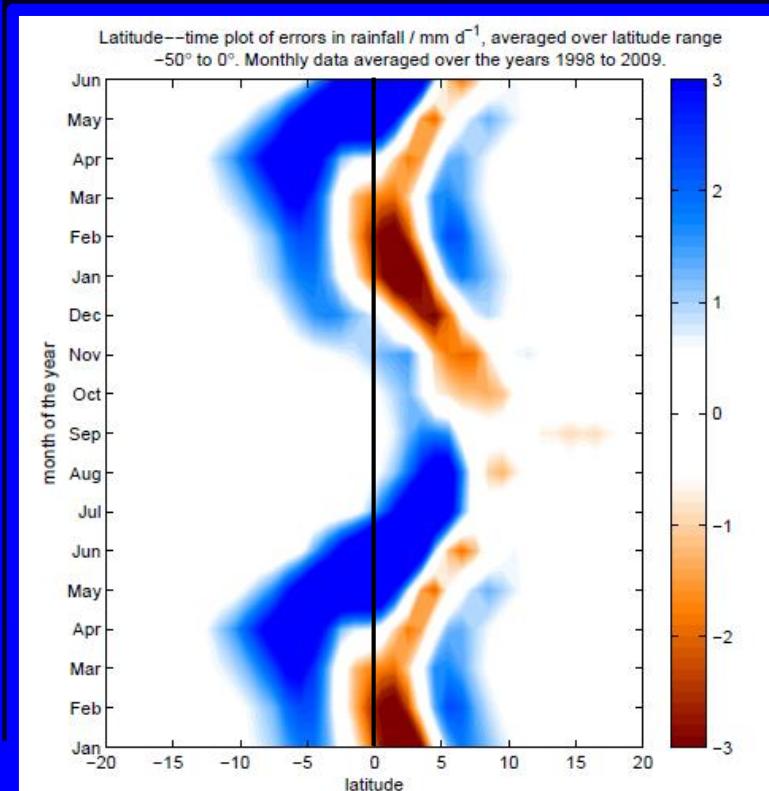
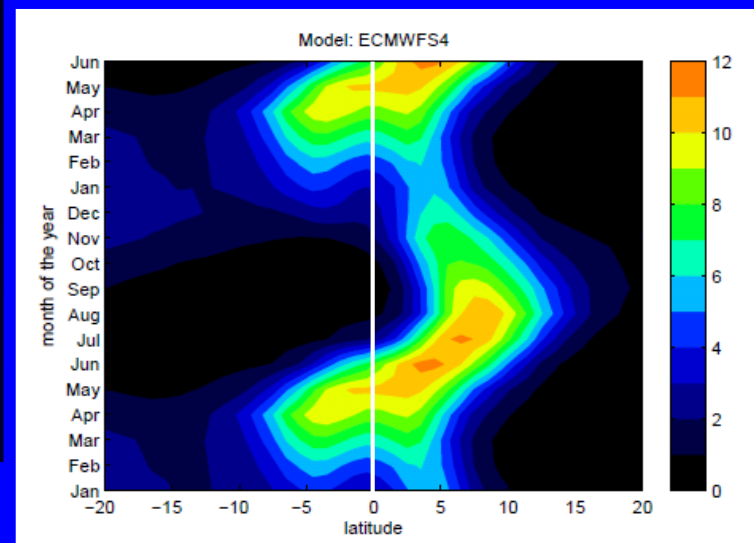
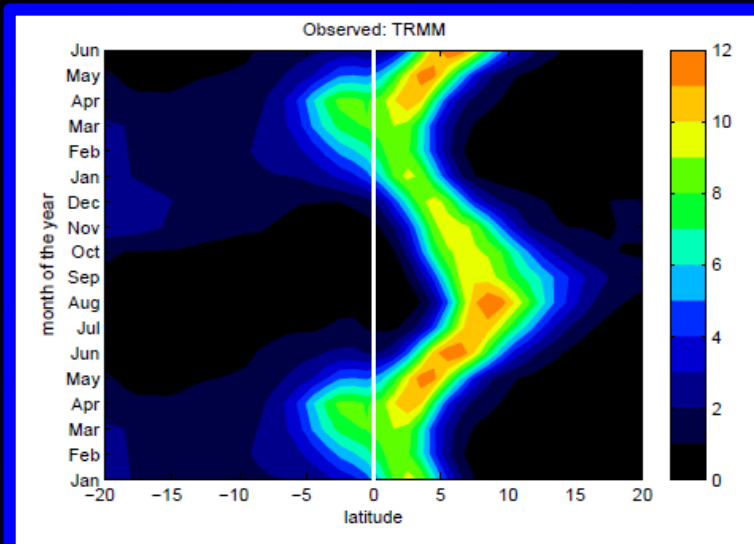




23-May-16

Atlantic: North—South Location of the ITCZ

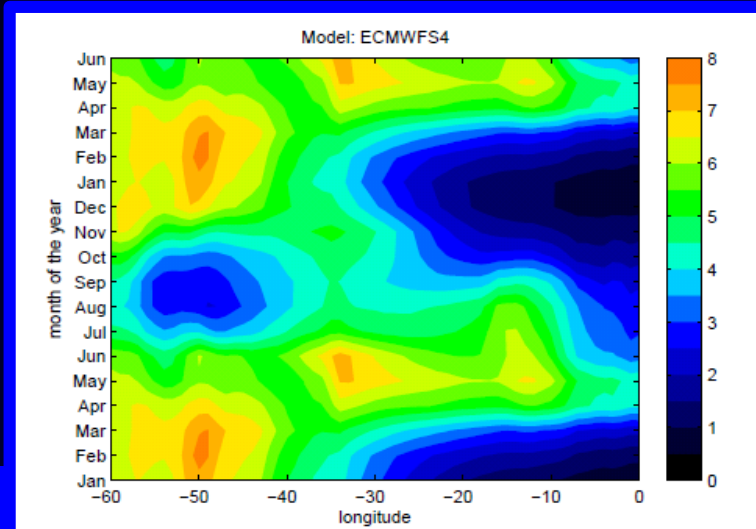
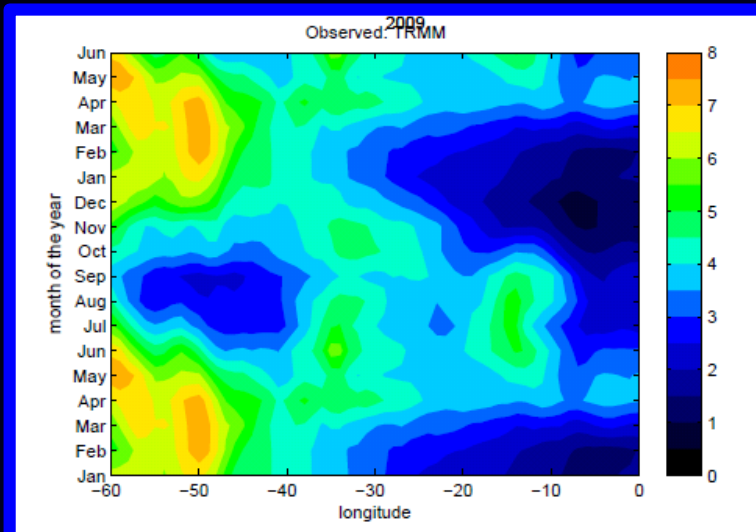
Latitude—time bias plots of rainfall / mm d⁻¹, averaged over longitudes 50° west to 0°.



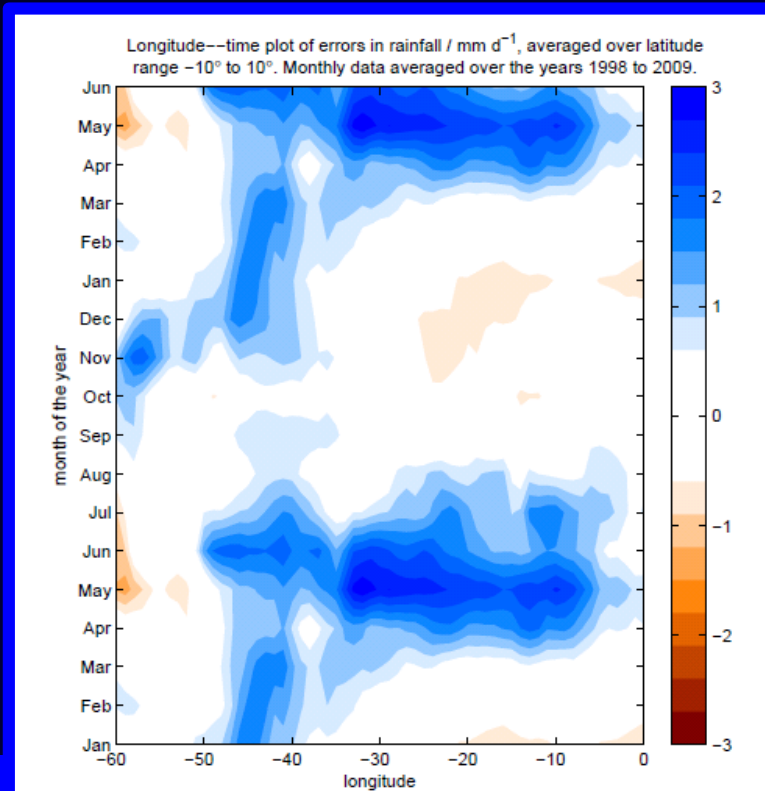


23-May-16

Atlantic: East–West Location of the ITCZ



Longitude–time bias plots of rainfall / mm d⁻¹, averaged over latitudes 10° north to 10° south.



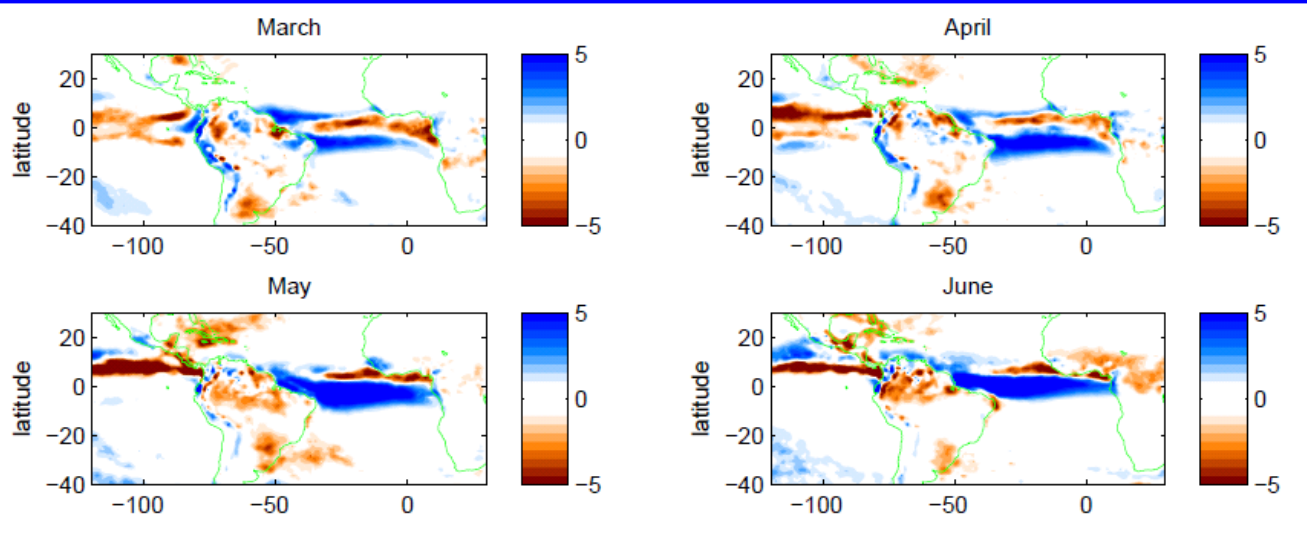
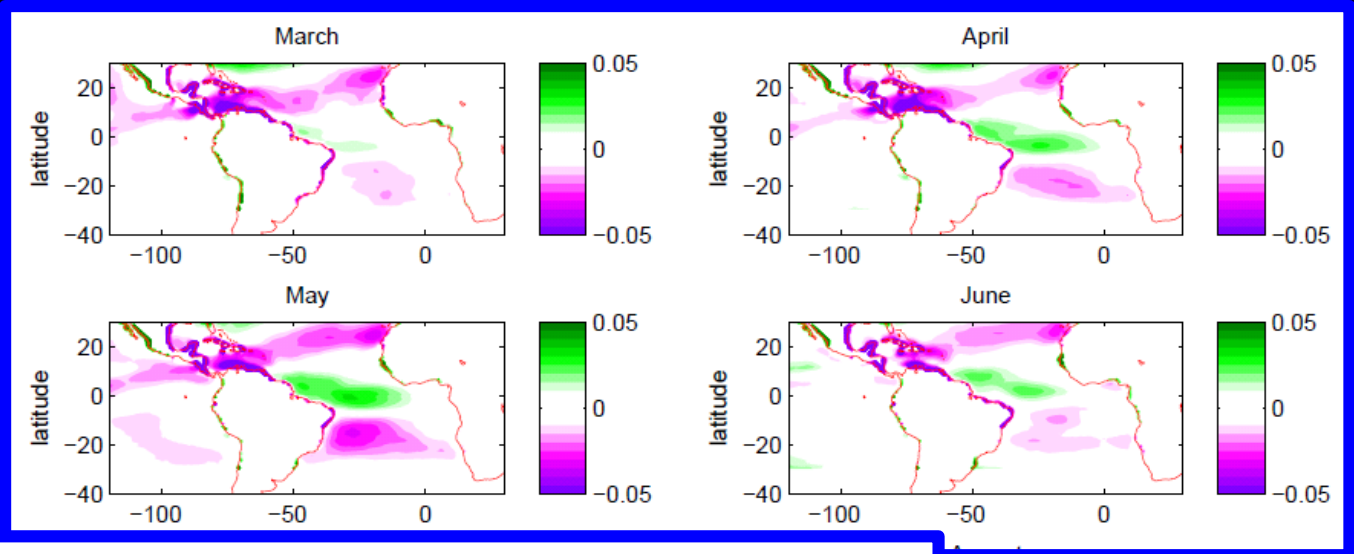


23-May-16

Atlantic: Focus on Northern Spring

Maps of model bias after seven months.

Zonal wind /
 m s^{-1}



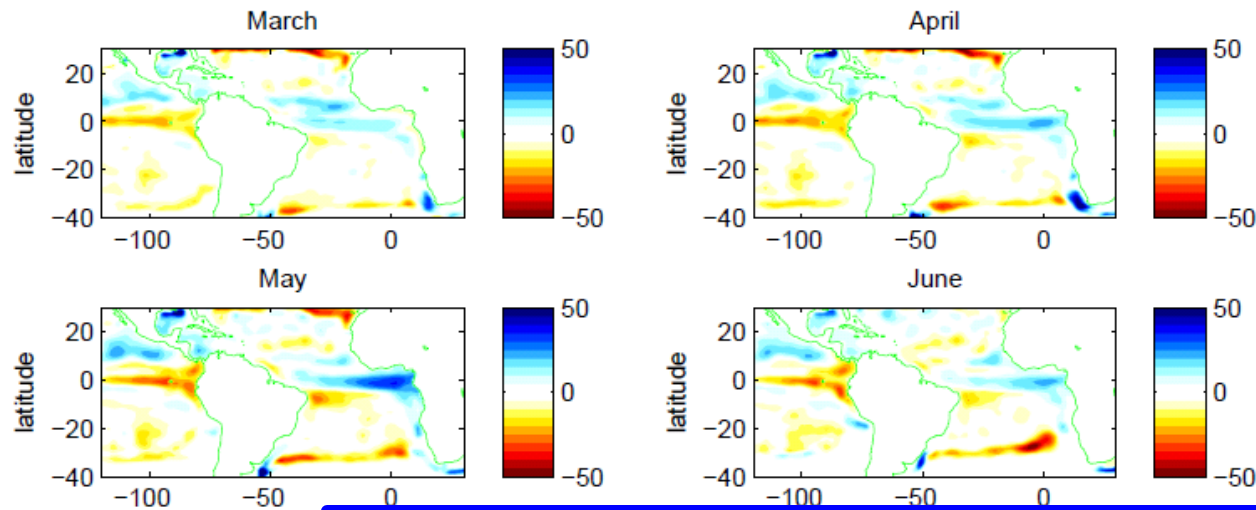
Rainfall /
 mm d^{-1}



23-May-16

Atlantic: Focus on Northern Spring

Maps of model bias after seven months.



Thermocline
depth / m
(defined as
depth of 20 °C
level)

Sea-surface
temperature
/ °C

