

Microsoft Windows

Contents

- [Get CA Certificate](#)
- [Configuring Windows 7 supplicant](#)
- [Configuring Windows 10](#)

Get CA Certificate

In order for the server to "trust" certificates generated through *pkIRISGrid* they must have the Certificate Authority (CA) root certificate installed.

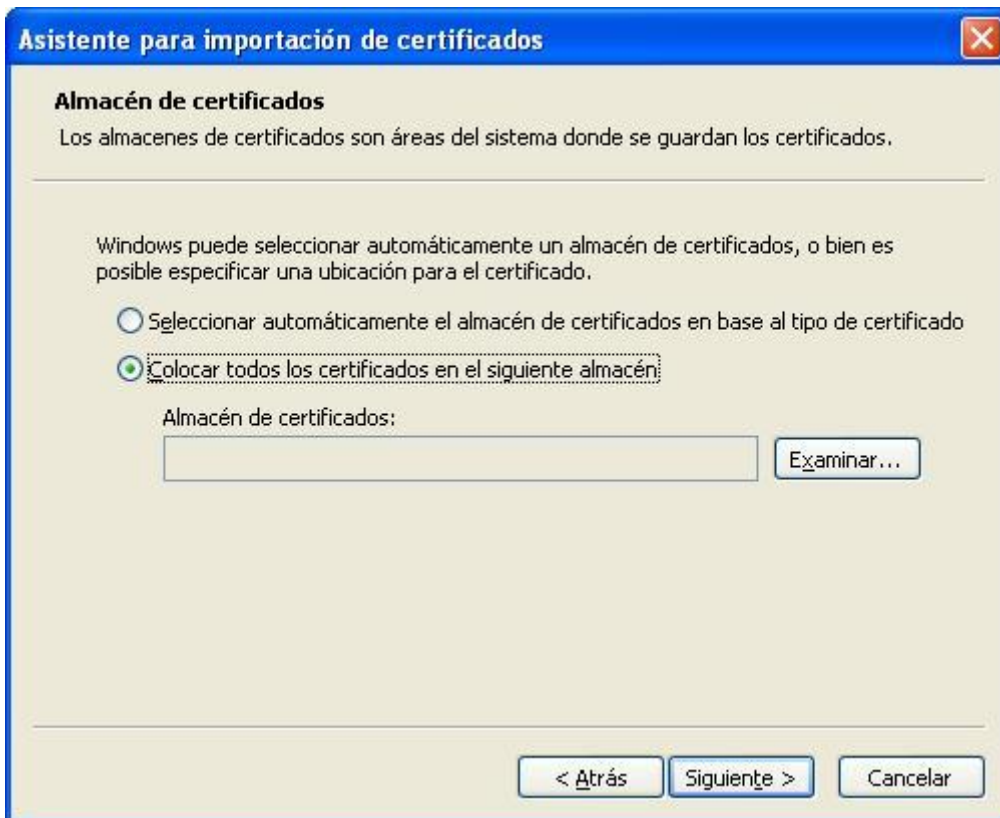
Download the file [IRISGridCA.der](#) from Microsoft Internet Explorer and click on "Abrir".



Click on "Instalar certificado ...".



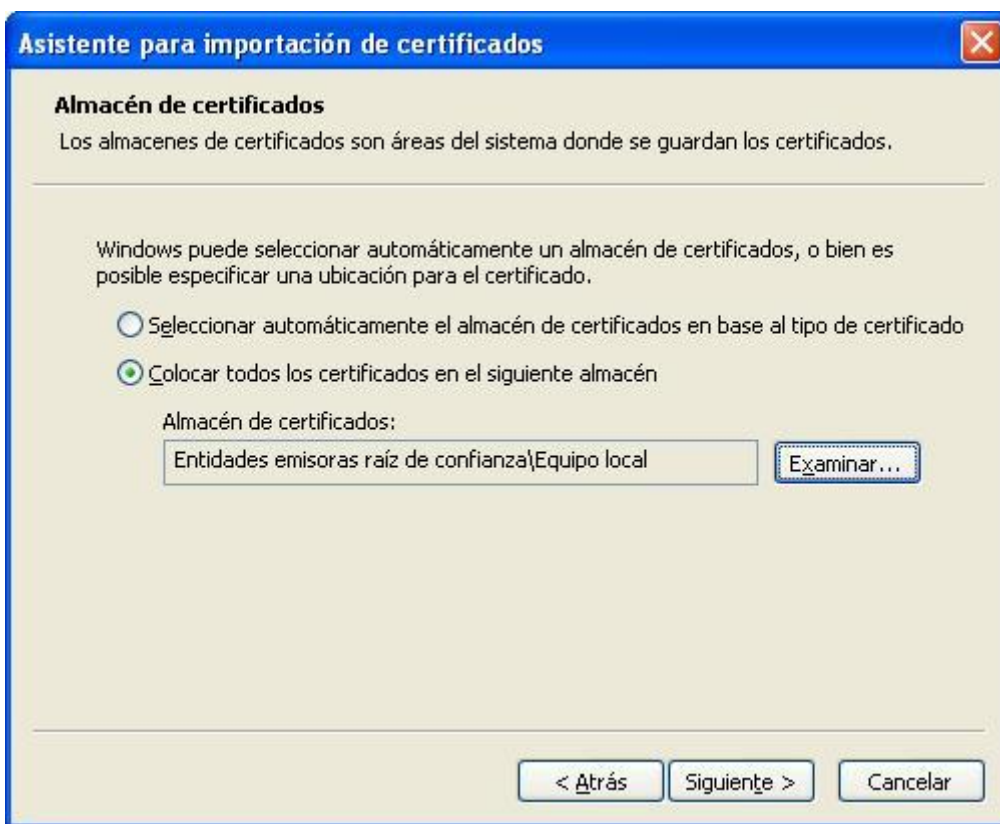
Click on “*Siguiente*”.



Select “*Colocar todos los certificados en el siguiente almacén:*” option and click on “*Examinar*”.



Click on “*Siguiente*”.



Click on “*Finalizar*”.



Click on "Sí".

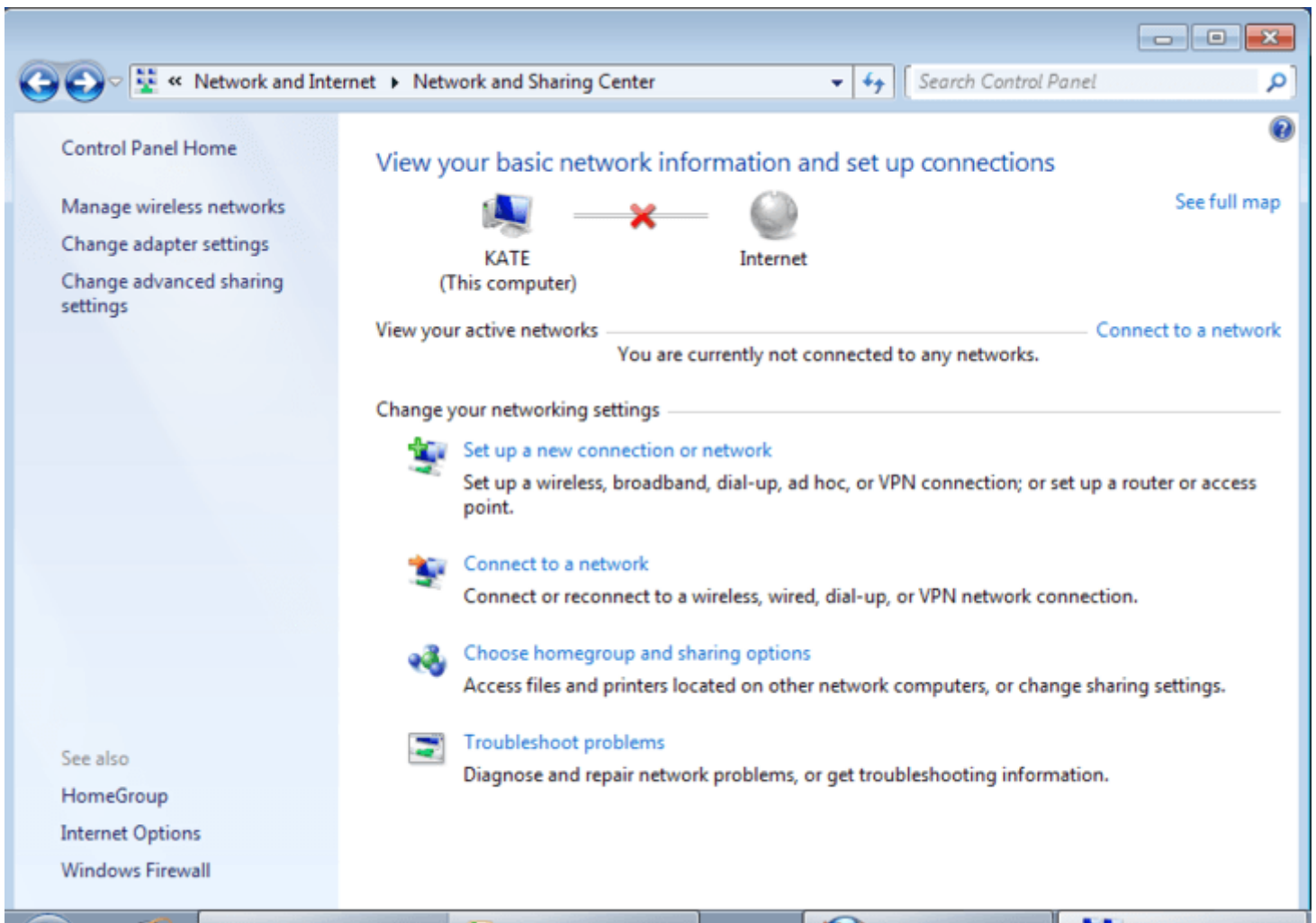


Finally, click on "Finalizar".

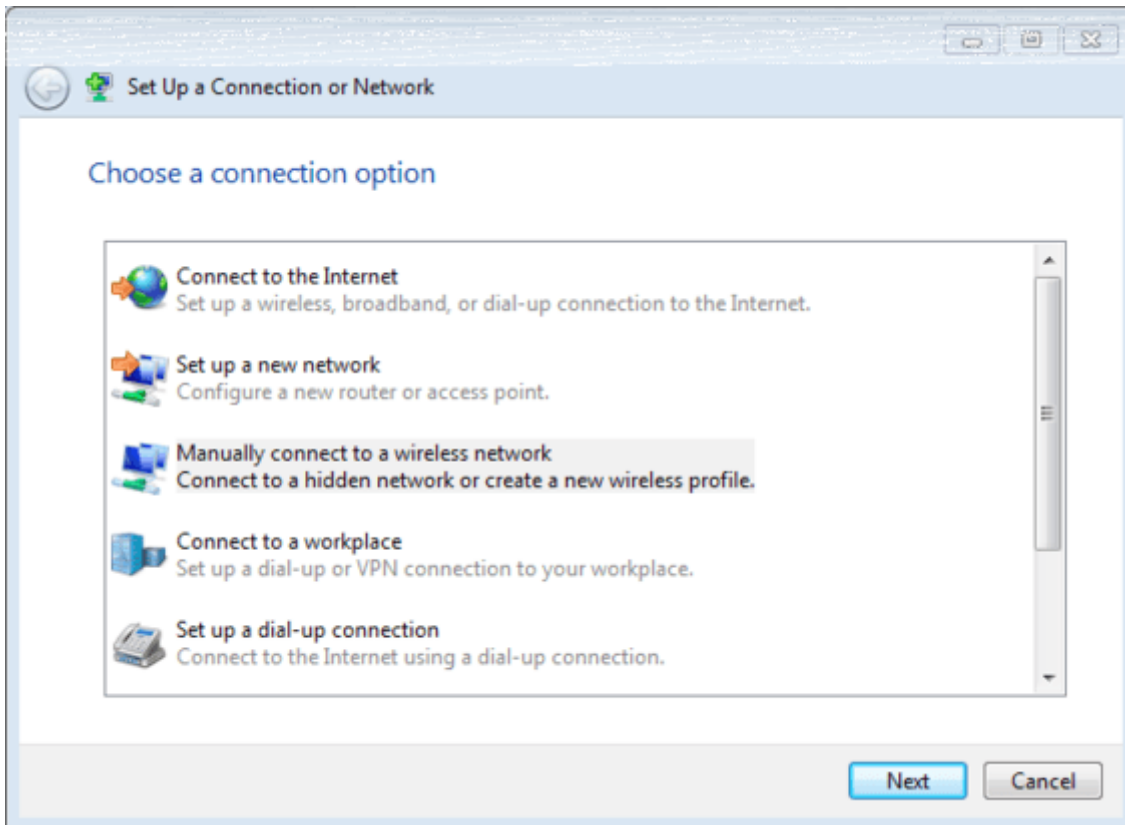


Configuring Windows 7 supplicant

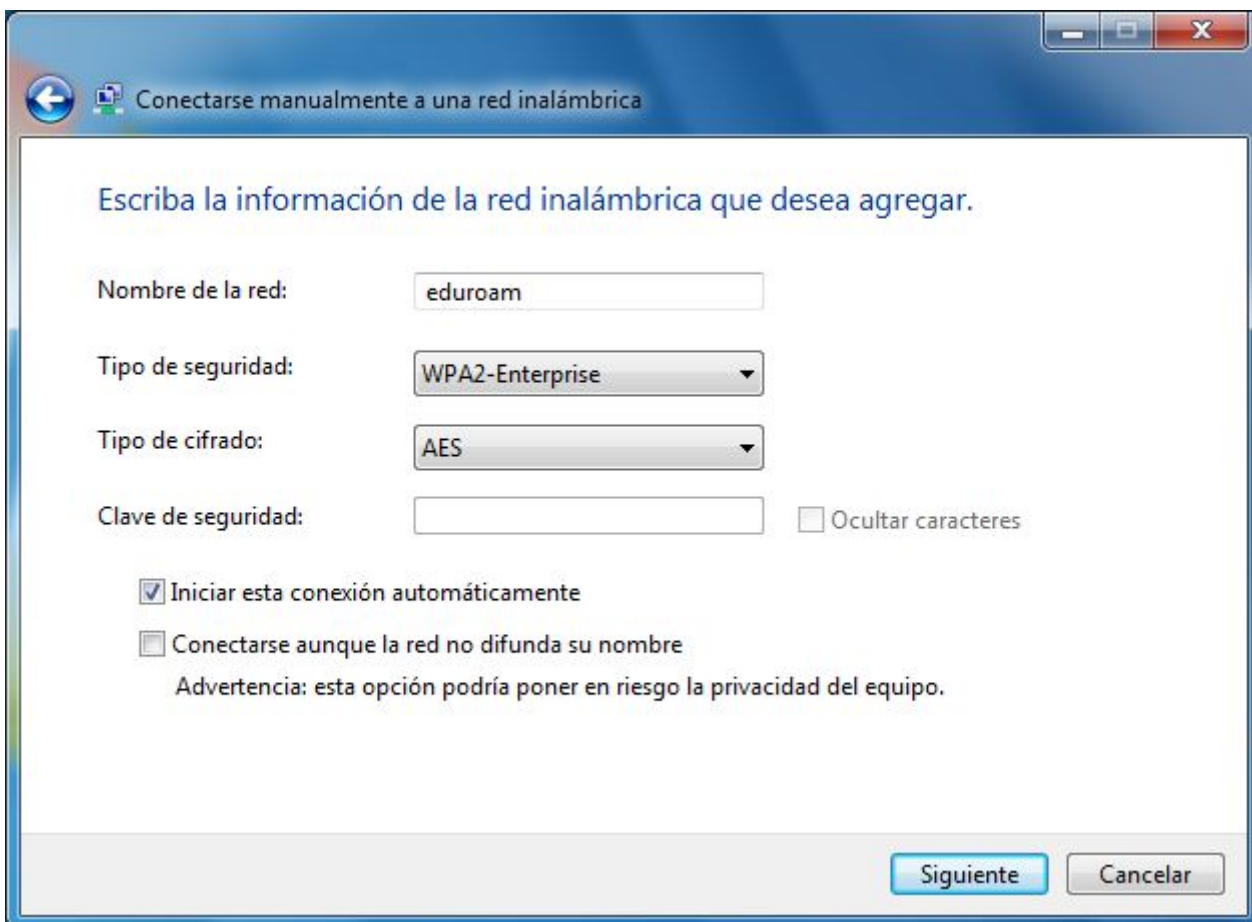
Go to "Control Panel -> All Control Panel Items -> Network and Sharing Center" and choose "Set up a new connection or network"



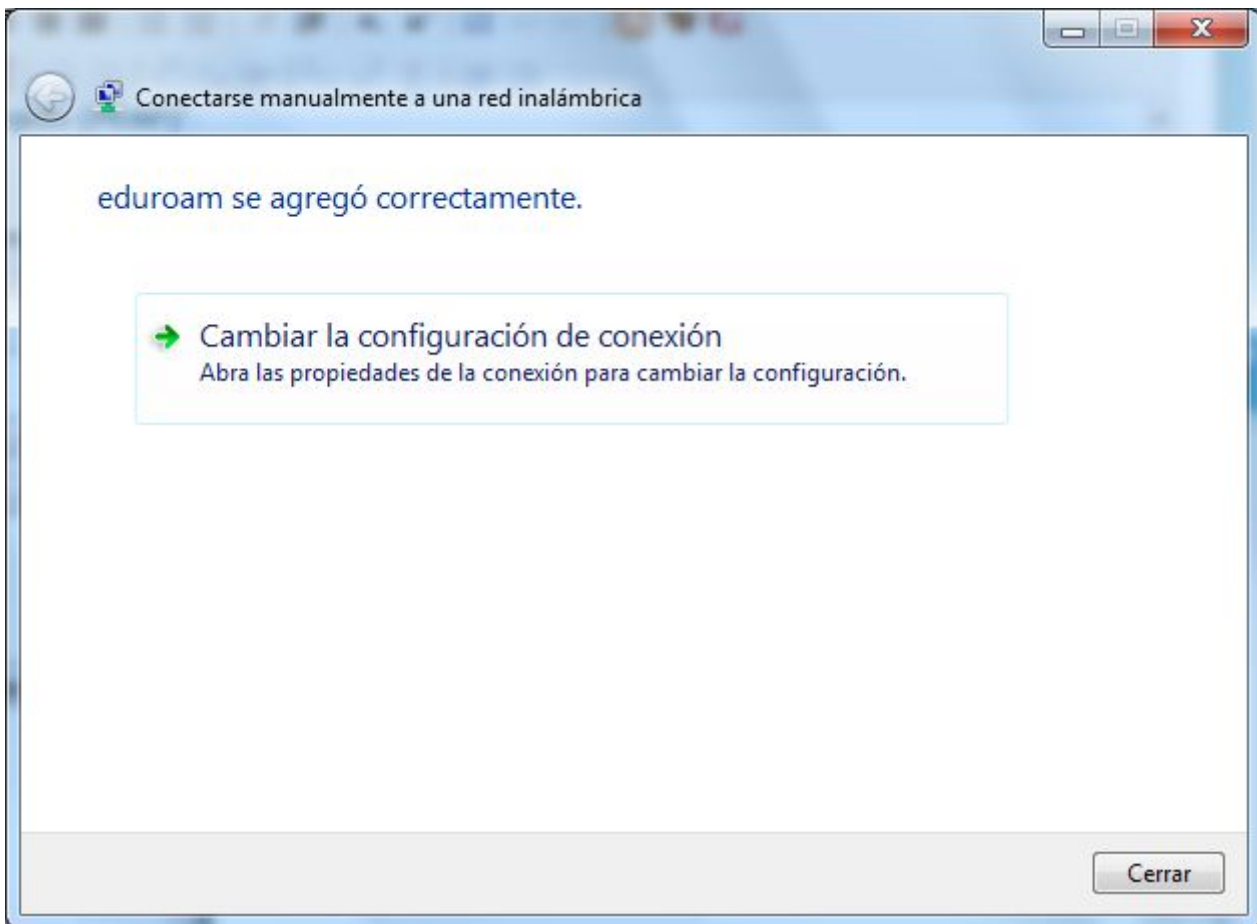
Choose "Manually connect to a wireless network" and click on "Next".



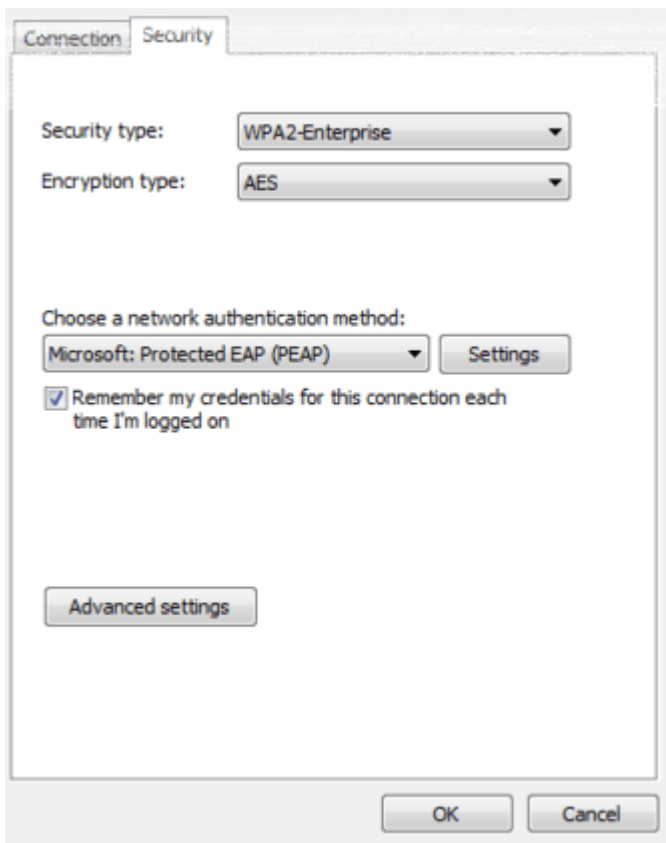
Enter "eduroam" for "Network Name" and click on "Next".



Click on "Change connection settings".

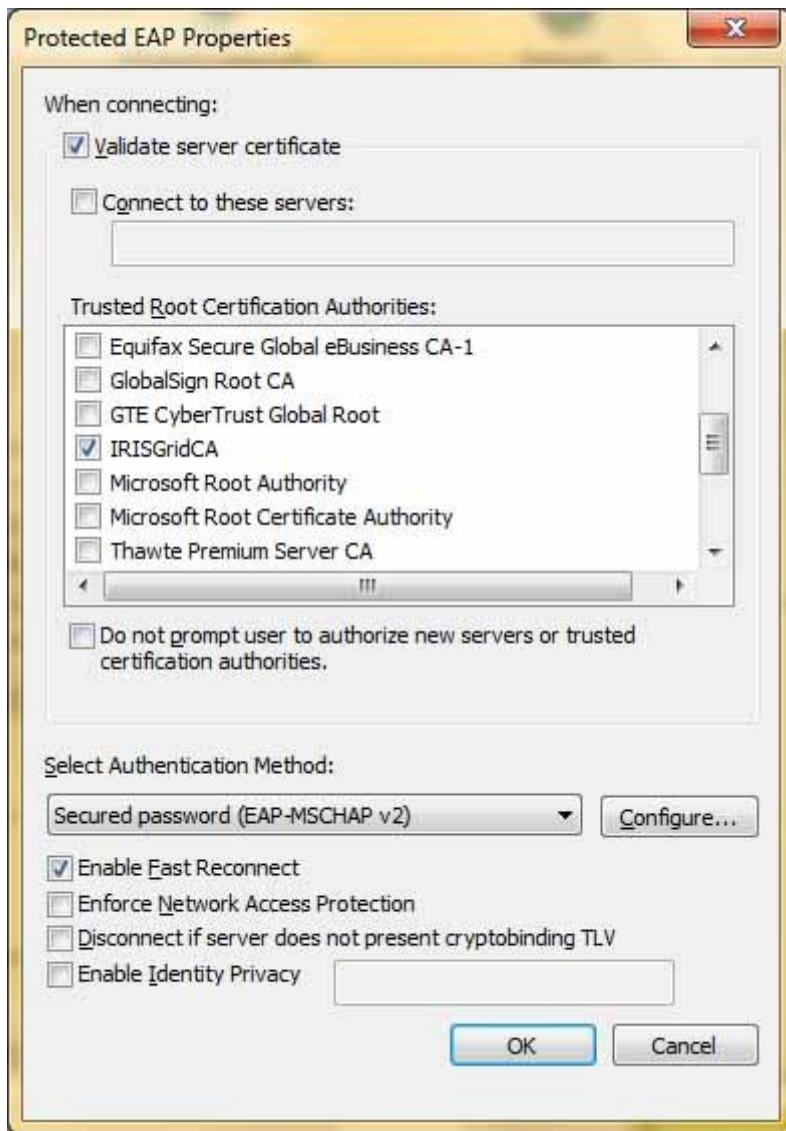


In the “*Security*” tab, select “*WPA2-Enterprise*” for the “*Security type*”, select “*AES*” for “*Encryption type*”, choose “*EAP protegido (PEAP)*” for “*Tipo de EAP*” and click on “*Settings*”.



In the “*Protected EAP Properties*” window, select “*Validate server certificate*”, check “*IRISGridCA*” for “*Trusted Root Certification Authorities*”, and choose “*Secured password (EAP-MSCHAP v2)*” for “*Select Authentication Method*”

”. Then click on “*Configure*”.

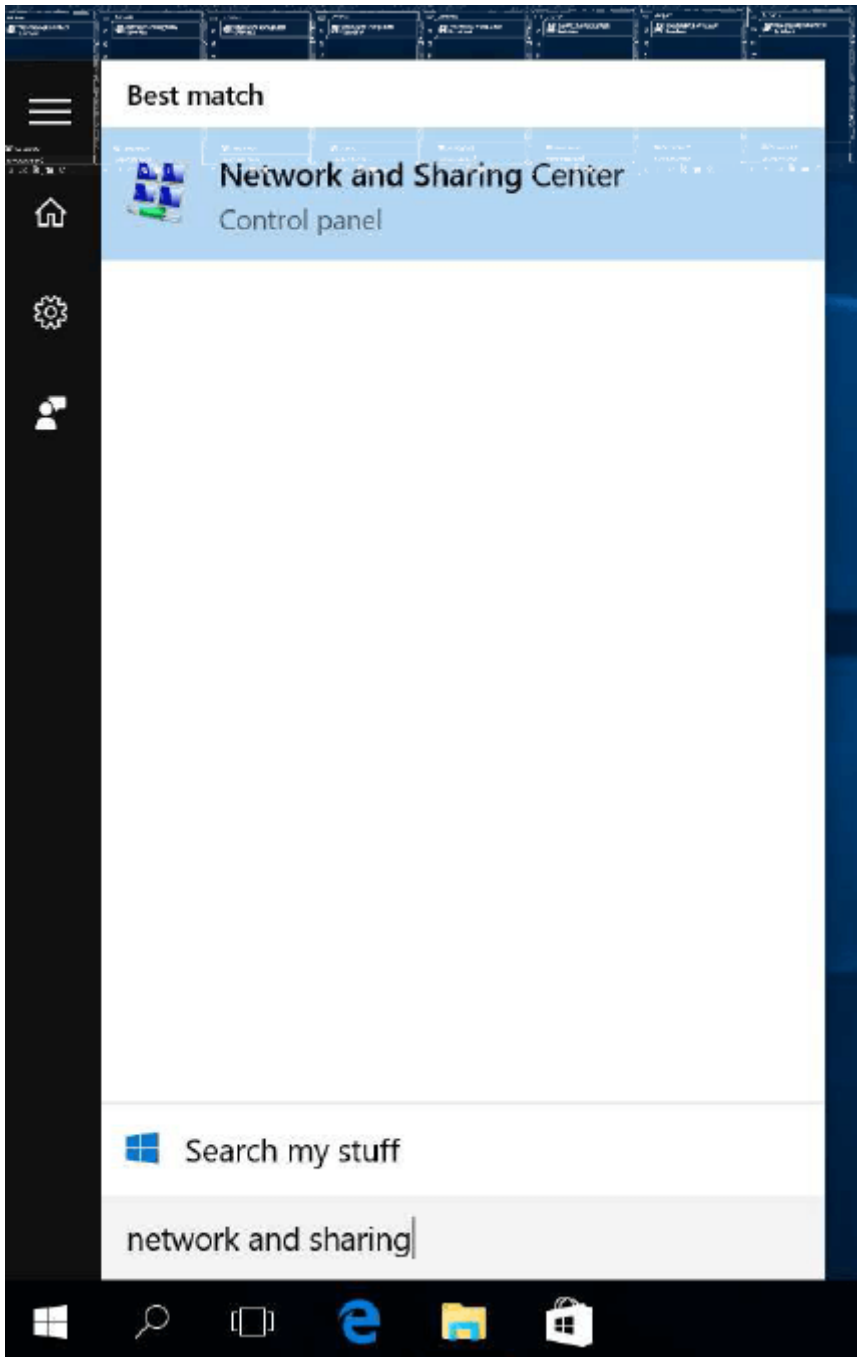


Finally, in the “*EAP MSCHAPv2 Properties*” window, unselect “*Automatically use my Windows logon name and password (and domain if any).*”



Configuring Windows 10

Go to start menu and then type “Network and Sharing Center”



Choose "Set up a new connection or network"

Network and Sharing Center

← → ▾ ↑  << Network and Internet >> Network and Sharing Center

[Control Panel Home](#)

[Change adapter settings](#)

[Change advanced sharing settings](#)

View your basic network information and

View your active networks _____
You are currently not connected to any networks.

Change your networking settings _____



[Set up a new connection or network](#)

Set up a broadband, dial-up, or VPN connection.







[Troubleshoot problems](#)

Diagnose and repair network problems, or get help.

Choose "Manually connect to a wireless network" and click on "Next".

←  Set Up a Connection or Network

Choose a connection option

-  **Connect to the Internet**
Set up a broadband or dial-up connection to the Internet.
-  **Set up a new network**
Set up a new router or access point.
-  **Manually connect to a wireless network**
Connect to a hidden network or create a new wireless profile.
-  **Connect to a workplace**
Set up a dial-up or VPN connection to your workplace.



Next

Cancel

Type "eduroam" on "Network Name", and select "WPA2-Enterprise" on "Security type", then click on "Next".



Manually connect to a wireless network

Enter information for the wireless network you want to add

Network name:

Security type:



Encryption type:



Security Key:

Hide characters

Start this connection automatically

Connect even if the network is not broadcasting

Warning: If you select this option, your computer's privacy might be at risk.

Next

Click on "Change connection settings".



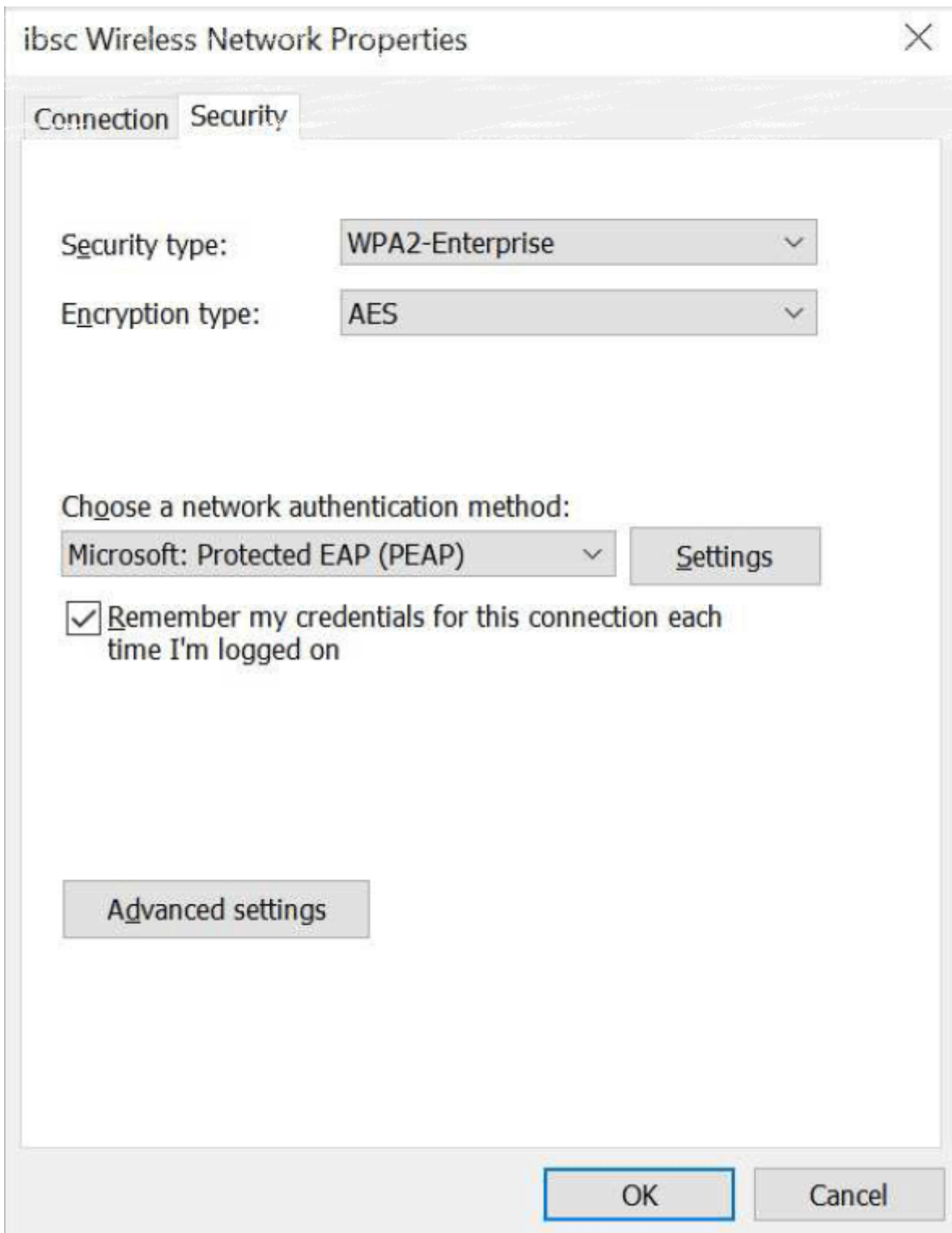
Manually connect to a wireless network

Successfully added ibsc

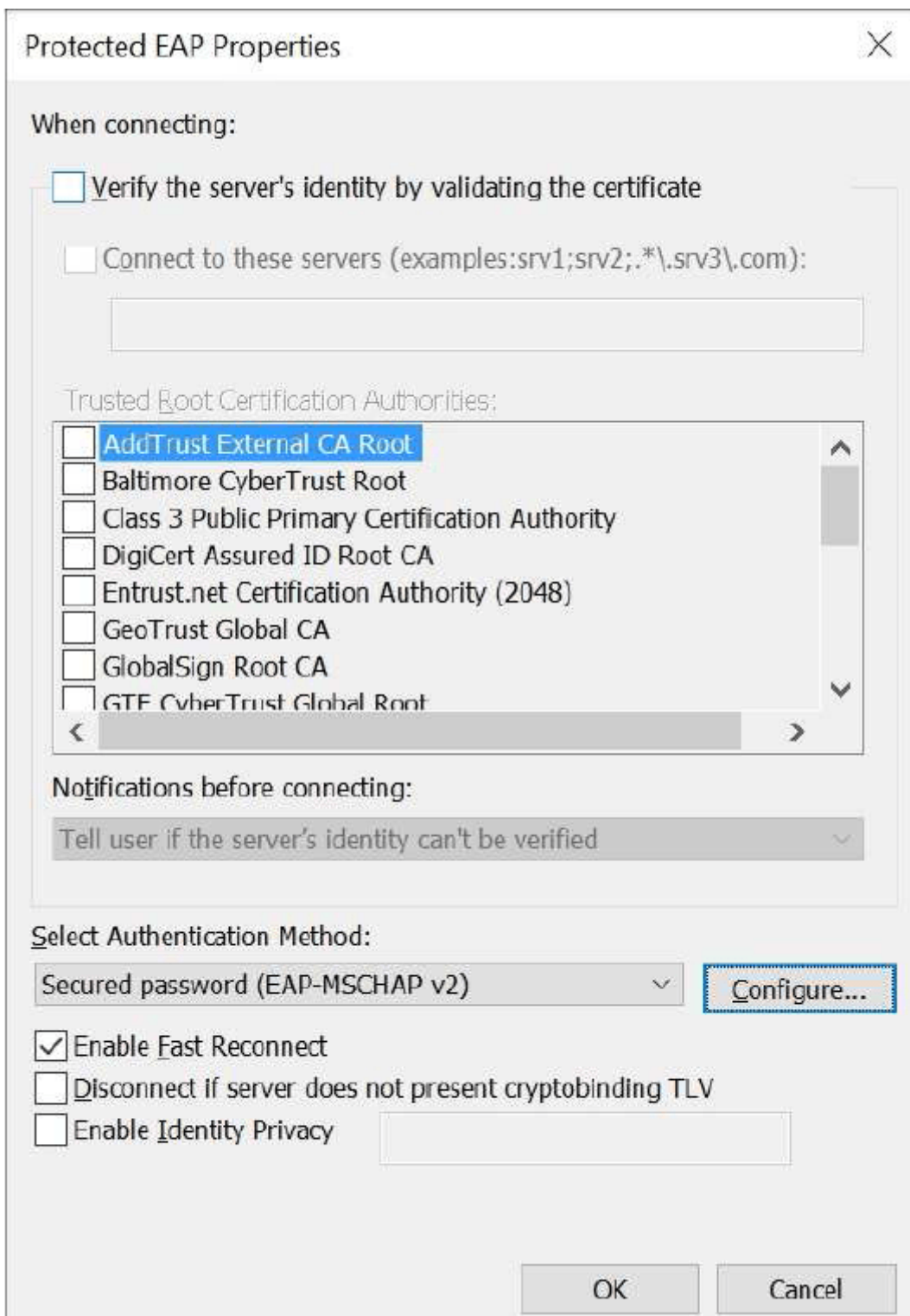
→ **Change connection settings**

Open the connection properties so that I can change the settings

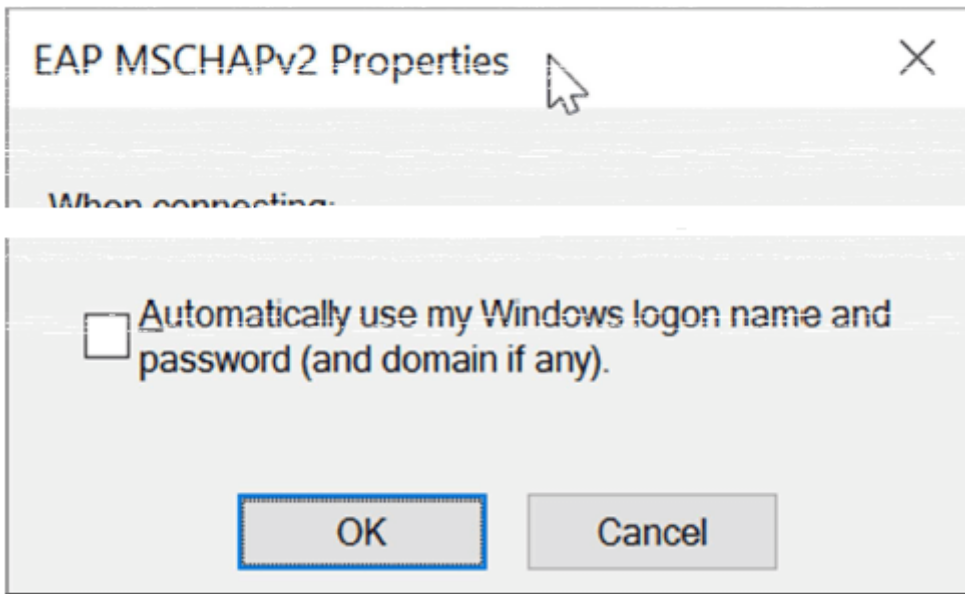
In the “Security” tab, select “WPA2-Enterprise” on “Security type”, select “AES” on “Encryption type”, and choose “Protected EAP (PEAP)” on “Authentication method” and click on “Settings”.



In the "Protected EAP Properties" window, uncheck "Validate server certificate" and choose "Secured password (EAP-MSCHAP v2)" on "Select Authentication Method". Then click on "Configure".



Finally, in the “EAP MSCHAPv2 Properties” window, unselect “Automatically use my Windows logon name and password (and domain if any).”



Barcelona Supercomputing Center - Centro Nacional de Supercomputación

Source URL (retrieved on 5 Mar 2024 - 05:05): <https://www.bsc.es/es/marenostrum/acceder-a-eduroam/windows>